

Getting started with your new Sonim® H700 5G Mobile Hotspot

Contents:

Sonim H700 5G Mobile Hotspot
6000 mAh Battery
AC Adapter
USB A to USB C (3.0) Cable
Battery Cover Lever
Quick Start Guide

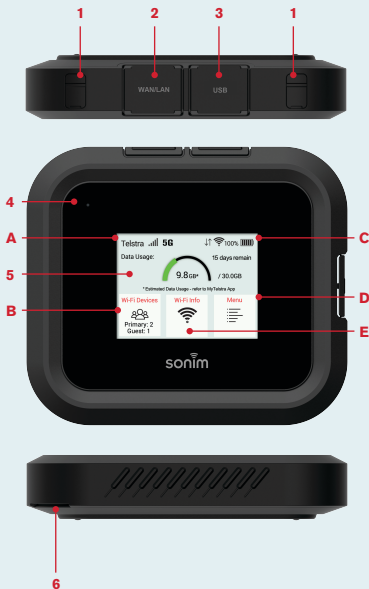
Sonim® H700 5G Mobile Hotspot Quick Start Guide



sonim.
A NEXA Company

1. External (TS-9) antenna ports
2. 2.5Gbps Ethernet port (RJ45)
3. USB C port
4. Status LED
5. Display
6. Battery cover opening (thumb catch)
7. Battery (under battery cover)
8. SIM tray (under the battery)
9. Power button

- A. Carrier information
- B. Wi-Fi Devices list
- C. Battery indicator
- D. Menu
- E. Wi-Fi Access Information



Device visuals are for general reference only. The physical product may differ in appearance, especially after any future software updates.



Support

Web: sonimtech.com/wireless-connectivity/help/h700

Technical Support: support@sonimtech.com

Request for warranty or RMA support:
RMA@sonimtech.com

Phone: For local contact numbers and hours of operation, please visit our website at sonimtech.com/wireless-connectivity/help

Access Support Information:

To access support info including a detailed user guide, please scan the following QR code using your smartphone.



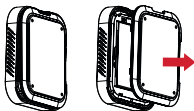
In the event of a device issue, please follow the steps below:

1. Contact Sonim, a NEXA company, via one of the Support options listed above.
2. Sonim will require you to provide a valid, original, proof of purchase issued to you by an authorised reseller, indicating the date of purchase and serial number of the device.
3. Where a genuine device fault is identified by our support team, you may be required to return your device to the original place of purchase for a replacement or refund as determined by Sonim.

How to insert a SIM

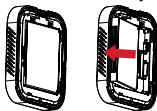
Step 1

Remove the battery cover using the battery cover lever tool in the thumb catch on the back edge of the H700. Page 8 illustrates the location of the thumb catch.



Step 2

Remove the battery.



Step 3

Align the SIM as indicated on the diagram next to the SIM tray, then gently slide the SIM card into the SIM tray with the metal contacts facing down.



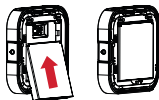
Note: For the H700 to support Internet access, your SIM must be activated.

How to insert the battery

Prior to first use, open the battery cover and remove the plastic tab on the battery.

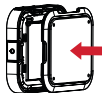
Step 1

Insert the battery flush into the cavity such that the three metallic contacts on the top of the battery are aligned with the metallic contacts within the battery compartment.



Step 2

Close the battery cover.



Note: On first use, the battery supplied with your H700 will not be fully charged. We recommend charging the battery to 100% with the provided AC adapter and USB cable.

IMPORTANT: The Sonim H700 is compatible with USB 3.0 cables or higher. Please use the supplied USB 3.0 cable for tethering and charging your device.

Maintaining the H700's IP68 rating

To maintain the IP68 rating against dust and water ingress, secure the protective flaps on all external ports (labelled 1, 2 and 3 on Page 3) and ensure that the battery cover fits securely.

Note: If you experience difficulty removing the battery cover, please use the provided battery cover lever tool to assist (see diagram below).



Setup your H700

1. To switch ON your H700, press and hold the Power button until the Sonim logo appears on screen.
2. Open the Wi-Fi settings on your laptop or a Wi-Fi device that you want to connect to your H700.
3. Select "Wi-Fi Info" to find your H700's Wi-Fi names (SSIDs) and passwords. To access the Internet, connect to a Wi-Fi SSID using the corresponding password.

Note: In "Wi-Fi Info", you can swipe left and right to view SSIDs/passwords. To activate/de-activate SSIDs and change usernames and passwords, please login to the Device Management web portal.

Device management web portal

1. On your Wi-Fi device or laptop that is connected to your H700, type **http://192.168.1.1** or **http://sonim.mobilehotspot/** in a web browser address bar.
2. Enter the **Username** and **Password**.
3. Click **Login**.

Note: The default username is "admin." The password can be found by navigating to Menu > Help > Admin Website on the H700 screen.

Information on how to change your Username and Password can be found in the user guide at sonimtech.com/wireless-connectivity/help/h700

SAR Information

The Sonim H700 5G Mobile Hotspot meets International Guidelines for Exposure to Radio Waves. To acquire specific SAR values for your device, please visit sonimtech.com/wireless-connectivity/help/h700

Conditions and Exclusions

1. This limited warranty only applies to Sonim branded devices. It does not apply to non-Sonim products, including accessories, even if packaged with, or sold with Sonim devices. Non-Sonim products may be covered by warranties provided by the manufacturer or supplier of the product.
2. The battery and charger associated with this device are warranted to be free from defects in material or workmanship for 1 year from the date of purchase by the original end-user. Use only Sonim approved batteries and chargers with your device. Use of other batteries or chargers may be unsafe or may damage the device.
3. Sonim encourages you to register your device at our website: sonimtech.com/register/ Registering within 30 days of date of purchase will make it easier to verify that your device is eligible for warranty. To obtain a warranty you will be required to provide valid, original, proof of purchase issued to you by an authorised reseller, indicating the date of purchase and serial number of the device.
4. Sonim warrants repaired or replaced devices for the remaining duration of the original warranty or for 90 days, whichever is longer.
5. Sonim may use new or refurbished parts to repair your device or may replace your device with a new or refurbished device. Replaced devices and parts become Sonim's property.
6. If you return your device for warranty service and it is found to be ineligible for warranty service, you may be charged a service fee.
7. Sonim does not cover the cost of packaging/shipping/returning the device/accessories to the original place of purchase. The customer is responsible for shipping charges for any warranty claims to the Sonim Service Center, warranty site or original place of purchase.
8. This limited warranty does not cover:
(a) damage resulting from abuse, accident or misuse; (b) damage resulting from use outside the parameters indicated in the User Guide, including those related to liquid, shock and dust exposure; (c) cosmetic damage including dents and scratches; (d) ordinary wear and tear; (e) damage resulting from use of this device with accessories, equipment or other devices or equipment not furnished or expressly approved by Sonim; (f) damage resulting from maintenance, service adjustment or installation of the

device, performed or attempted by any person or entity not expressly authorised by Sonim; (g) loss of use of the device; (h) fire, flood, windstorm, lightning, earthquake, exposure to extreme weather conditions, electrical surge or improper voltage; (i) device performance issues resulting from cellular signal reception or transmission; and (j) devices in which the serial number is missing or has been altered, damaged or defaced; and (k) defects damage caused by a user's bypassing security controls to gain unauthorised root access or by rooting devices with unauthorised or altered operating system software installed by a user or third party.

Sonim does not warrant that use of your device will be uninterrupted or error-free.

THIS WARRANTY AND THE REMEDIES SET FORTH ABOVE ARE EXCLUSIVE AND IN LIEU OF ALL OTHER RIGHTS, REMEDIES AND WARRANTIES. THERE ARE NO OTHER WARRANTIES, EXPRESS OR IMPLIED, WRITTEN OR ORAL. SONIM EXPRESSLY DISCLAIMS ALL IMPLIED WARRANTIES, INCLUDING WITHOUT LIMITATION ANY IMPLIED WARRANTIES OF MERCHANTABILITY OR FITNESS FOR A PARTICULAR PURPOSE. IN LOCATIONS IN WHICH PARTICULAR IMPLIED WARRANTIES MAY NOT BE DISCLAIMED, ALL SUCH WARRANTIES ARE LIMITED TO THE DURATION OF THIS LIMITED WARRANTY. IN NO EVENT

SHALL SONIM OR ITS LICENSORS BE LIABLE FOR, DIRECT, SPECIAL, INCIDENTAL OR CONSEQUENTIAL DAMAGES OF ANY NATURE WHATSOEVER, WHETHER RESULTING FROM BREACH OF WARRANTY OR ANY OTHER LEGAL CLAIM OR CAUSE OF ACTION, INCLUDING BUT NOT LIMITED TO i) LOSS OF, PROFITS, TIME, COMMERCIAL GAIN, DATA, PROGRAMS, SOFTWARE OR GOODWILL, ii) DOWNTIME OR DAMAGE TO OR REPLACEMENT OF PROPERTY, EQUIPMENT OR DATA. ALL SUCH LIMITATIONS ARE ASSERTED BY SONIM TO THE FULLEST EXTENT PERMITTED BY LAW.

This Limited Warranty gives you specific legal rights. You may have other legal rights depending on your country/state.